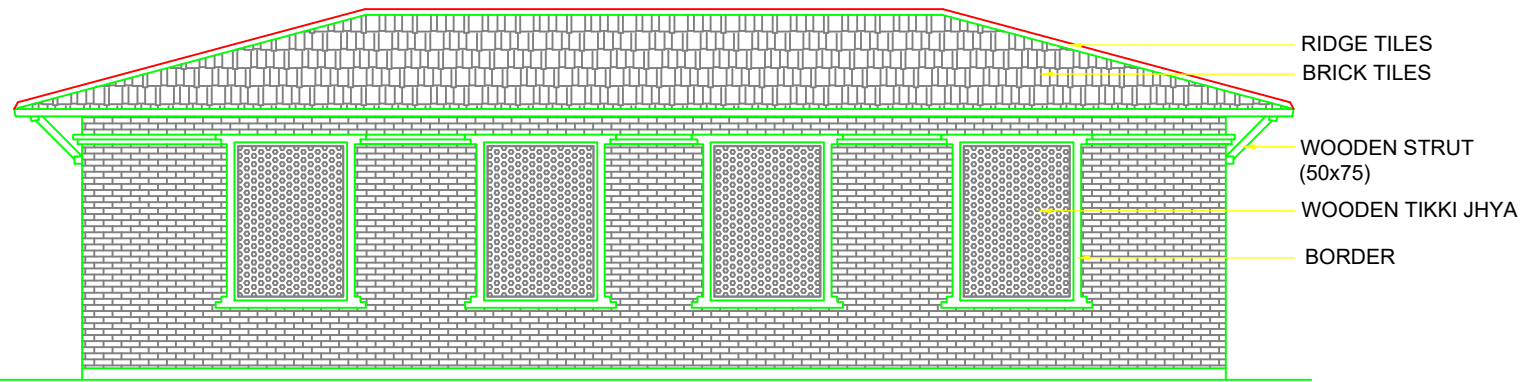
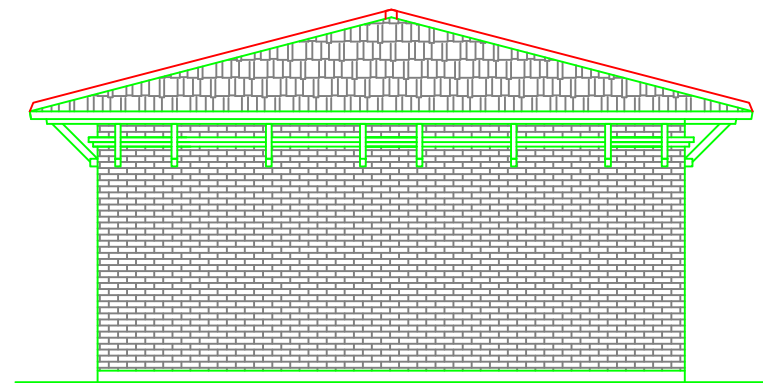


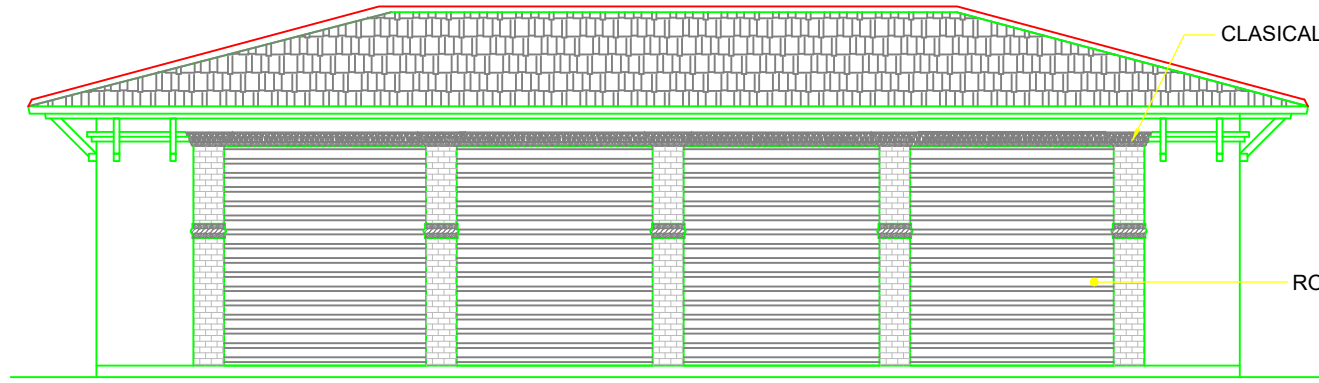
PLAN (BLOWER BUILDING)



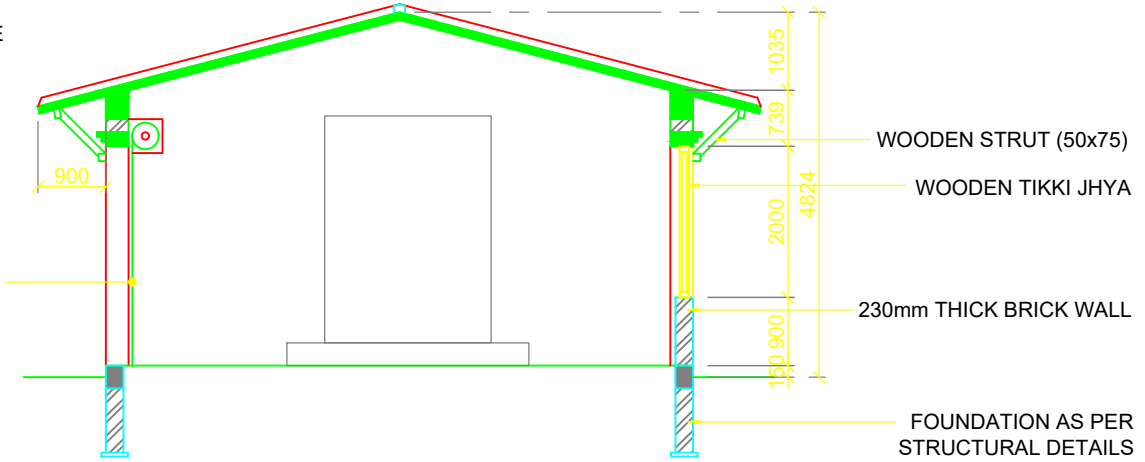
NORTH ELEVATION (15 x 7.5)



EAST & WEST ELEVATIONS



FRONT ELEVATION



SECTION A.A

HIGH POWERED COMMITTEE FOR INTEGRATED DEVELOPMENT FOR BAGMATI CIVILIZATION	CONSULTANTS : Landell Mills Ltd. UK in association with Full Bright Consultancy Pvt. Ltd. Nepal Project Engineering Consultancy and Research Pvt. Ltd. Nepal	TITLE: BLOWER	CONSULTANTS	NAME	SCALE: 1 : 100	ALL DIMENSIONS ARE IN MM
			DRAWN BY : Badri Juwal		DATE: Jan 2018	
BAGMATI RIVER BASIN IMPROVEMENT PROJECT			DESIGNED BY :		PROJECT NO:	SHEET NO: 1/10
			CHECKED & ENDORSED BY:		DRAWING NO:	REV. - 00